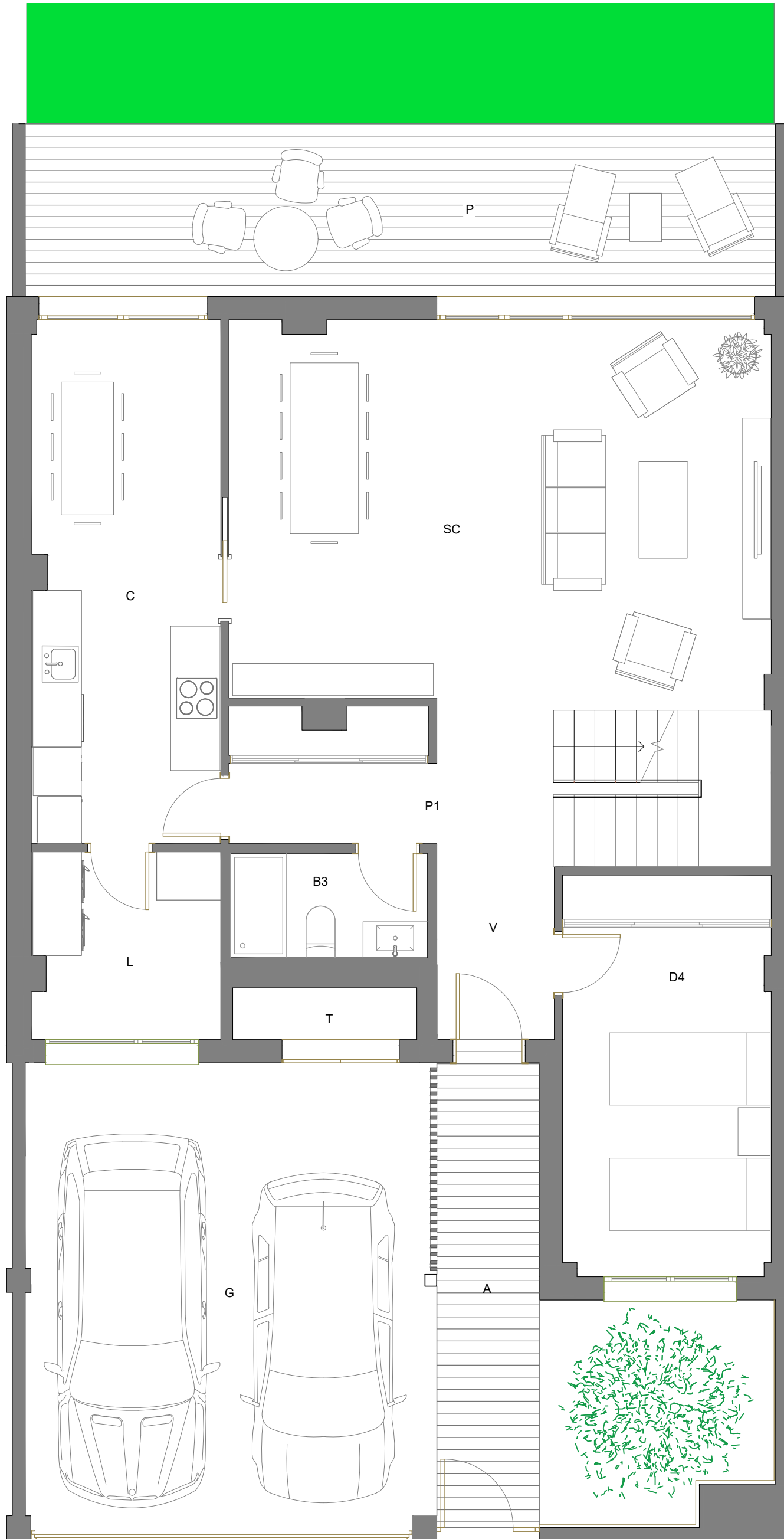


# SOTO DE LA ABADÍA

RESIDENCIAL



PLANTA

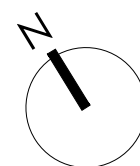
BAJA

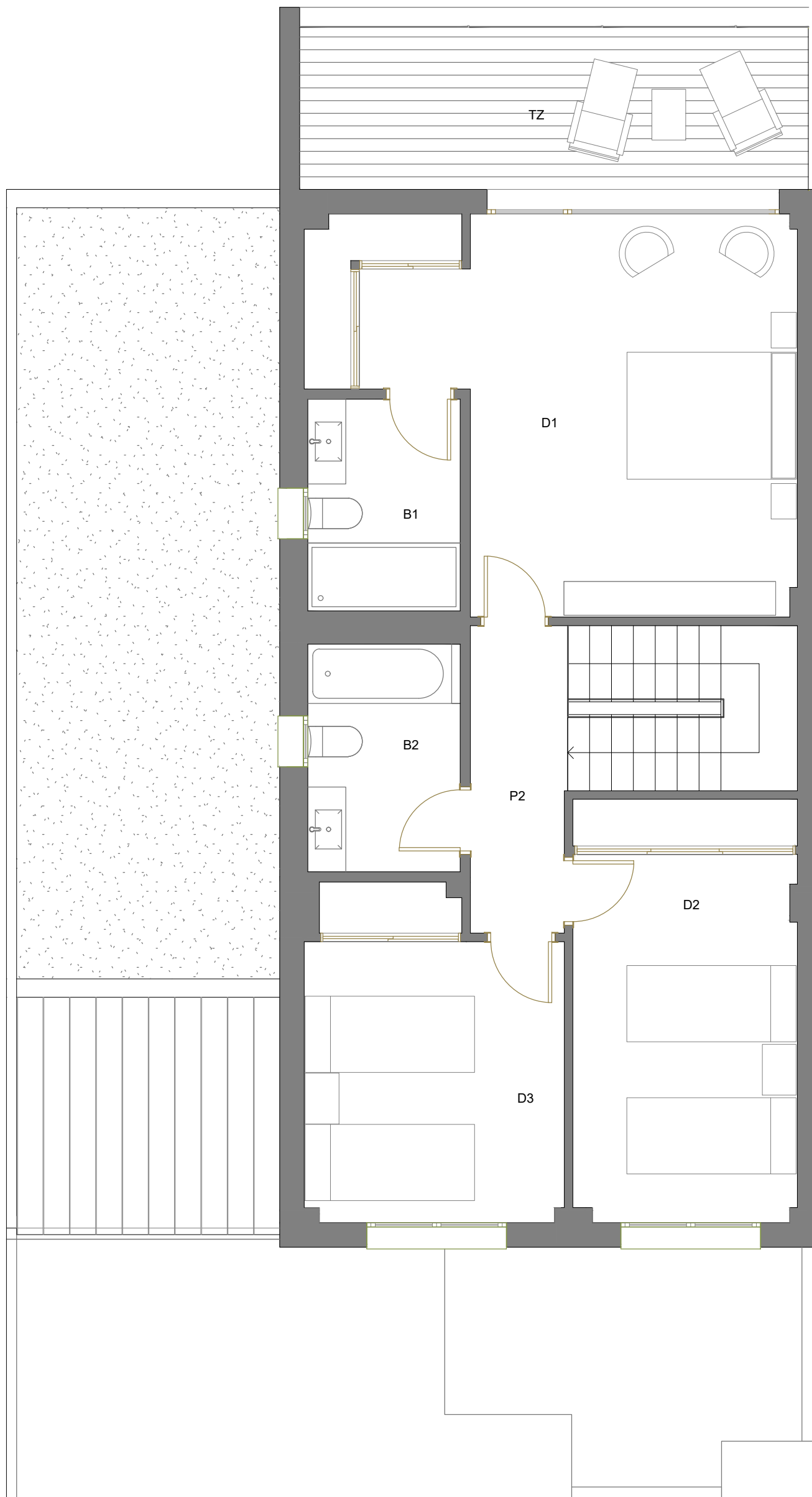
## VIVIENDA TIPO B

|                          |               |                             |
|--------------------------|---------------|-----------------------------|
| V                        | Vestíbulo     | 3.14 m <sup>2</sup>         |
| P1                       | Pasillo 1     | 12.33 m <sup>2</sup>        |
| SC                       | Salón Comedor | 32.16 m <sup>2</sup>        |
| C                        | Cocina        | 15.28 m <sup>2</sup>        |
| L                        | Lavadero      | 5.43 m <sup>2</sup>         |
| P2                       | Pasillo 2     | 4.03 m <sup>2</sup>         |
| D1                       | Dormitorio 1  | 22.26 m <sup>2</sup>        |
| D2                       | Dormitorio 2  | 13.15 m <sup>2</sup>        |
| D3                       | Dormitorio 3  | 11.31 m <sup>2</sup>        |
| D4                       | Dormitorio 4  | 12.91 m <sup>2</sup>        |
| B1                       | Baño 1        | 4.50 m <sup>2</sup>         |
| B2                       | Baño 2        | 4.84 m <sup>2</sup>         |
| B3                       | Baño 3        | 3.18 m <sup>2</sup>         |
| <b>Sup. útil cerrada</b> |               | <b>144.52 m<sup>2</sup></b> |
| A                        | Acceso        | 15.25 m <sup>2</sup>        |
| P                        | Porche        | 20.08 m <sup>2</sup>        |
| TZ                       | Terraza       | 11.45 m <sup>2</sup>        |
| G                        | Garaje        | 29.45 m <sup>2</sup>        |
| T                        | Trastero      | 1.48 m <sup>2</sup>         |

**Sup. útil abierta** 77.71 m<sup>2</sup>  
**SUPERFICIE ÚTIL TOTAL** 222.23 m<sup>2</sup>

Jardín S/vivienda m<sup>2</sup>



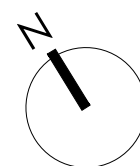


### VIVIENDA TIPO B

|                          |               |                             |
|--------------------------|---------------|-----------------------------|
| V                        | Vestíbulo     | 3.14 m <sup>2</sup>         |
| P1                       | Pasillo 1     | 12.33 m <sup>2</sup>        |
| SC                       | Salón Comedor | 32.16 m <sup>2</sup>        |
| C                        | Cocina        | 15.28 m <sup>2</sup>        |
| L                        | Lavadero      | 5.43 m <sup>2</sup>         |
| P2                       | Pasillo 2     | 4.03 m <sup>2</sup>         |
| D1                       | Dormitorio 1  | 22.26 m <sup>2</sup>        |
| D2                       | Dormitorio 2  | 13.15 m <sup>2</sup>        |
| D3                       | Dormitorio 3  | 11.31 m <sup>2</sup>        |
| D4                       | Dormitorio 4  | 12.91 m <sup>2</sup>        |
| B1                       | Baño 1        | 4.50 m <sup>2</sup>         |
| B2                       | Baño 2        | 4.84 m <sup>2</sup>         |
| B3                       | Baño 3        | 3.18 m <sup>2</sup>         |
| <b>Sup. útil cerrada</b> |               | <b>144.52 m<sup>2</sup></b> |
| A                        | Acceso        | 15.25 m <sup>2</sup>        |
| P                        | Porche        | 20.08 m <sup>2</sup>        |
| TZ                       | Terraza       | 11.45 m <sup>2</sup>        |
| G                        | Garaje        | 29.45 m <sup>2</sup>        |
| T                        | Trastero      | 1.48 m <sup>2</sup>         |

**Sup. útil abierta** 77.71 m<sup>2</sup>  
**SUPERFICIE ÚTIL TOTAL** 222.23 m<sup>2</sup>

Jardín S/vivienda m<sup>2</sup>



PLANTA

PRIMERA